



Product Specifications

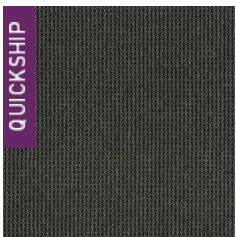
Construction	Textured Loop
Backing	Woven Polypropylene
Dye Method	Solution Dyed
Fiber Type	APEX SDP® Polyester
Face Weight	20 oz./sy (678 grams/m2)
Pile Density	5020 oz./y3 (186.14 kg/m3)
Pattern Repeat	.40" (w) x .50" (l) approx. (1.02cm x 1.27cm)
Gauge	1/10 (3.94 rows/cm)
Standard Width	12 ft 3.66 m
Standard Adhesive	Commercialon Premium Carpet Adhesive
Standard Warranties	Standard Back APEX® SDP Polyester Fiber
Optional Warranties	iLoc® Backing

Special Technologies

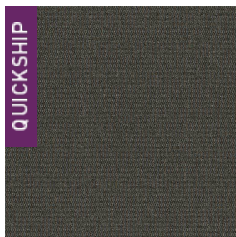
Environmental Specifications & Tests

NSF 140:	N/A Certified
Total Recycled Content	0%
Flooring Radiant Panel	Class 1
Smoke Density	Less than 450.0 flaming (ASTM E 662)
Static Test	Less than 3.0 kv (AATCC-134)
ADA Compliance	Compliant For Accessible Routes
Pill Test	Yes
Lightfastness	Yes

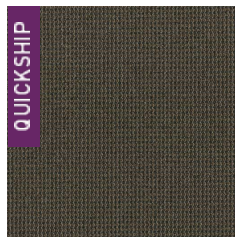
Colorways



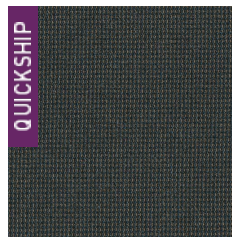
3285 Gravel Road



3286 Covered Bridge



3287 Sharp Curves



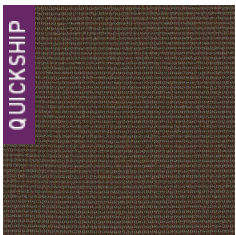
3288 Amazing Views



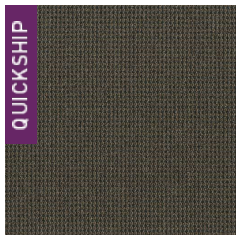
3289 Sunday Drive



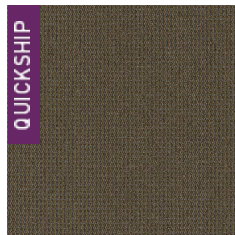
3290 Scenic Trip



3291 Roundabout



3292 Adventure



3293 Road Less Traveled