



Product Specifications

Construction	Textured Loop
Backing	Nexus® Modular
Dye Method	Solution Dyed
Fiber Type	APEX SDP® Polyester
Face Weight	26 oz./sy (882 grams/m ²)
Pile Density	7698 oz./y ³ (285.45 kg/m ³)
Pattern Repeat	N/A
Gauge	1/10 (3.94 rows/cm)
Standard Size	24" x 24" approx. (60.96cm x 60.96cm)
Standard Adhesive	Commercialon Premium Modular Adhesive
Optional Adhesive	TileTabs
Standard Warranties	Nexus Modular Commercialon Adhesive for Modular Carpet & LVT APEX® SDP Polyester Fiber
Optional Warranties	Commercialon High Moisture Adhesive for Modular Carpet and LVT Tile Tabs

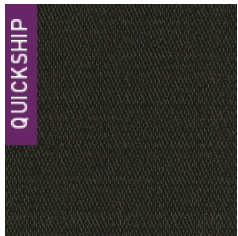
Special Technologies

Environmental Specifications & Tests

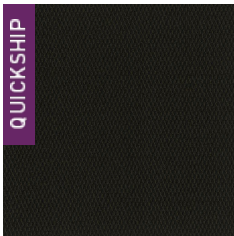
NSF 140:	Gold Certified
Total Recycled Content	66.3%
Flooring Radiant Panel	Class 1
Smoke Density	Less than 450 flaming (ASTM E 662)
Static Test	Less than 4 kv (AATCC-134)
ADA Compliance	Compliant For Accessible Routes
Pill Test	Yes
Lightfastness	Yes

Installation Methods: Quarter Turn

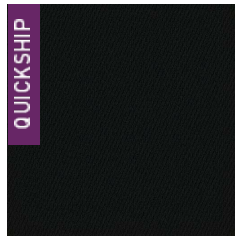
Colorways



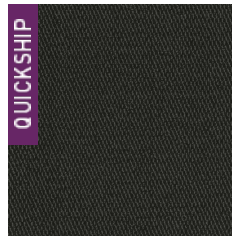
1418 Fallow



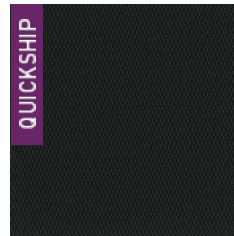
1419 Café



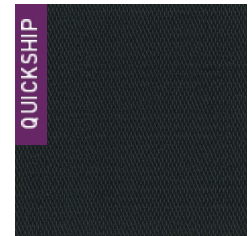
1420 Pitch



1421 Nickel



1422 Onyx



1423 Noir