



Product Specifications

| | |
|----------------------------|--|
| Construction | Textured Loop |
| Backing | Woven Polypropylene |
| Dye Method | Solution Dyed |
| Fiber Type | APEX SDP® Polyester |
| Face Weight | 20 oz./sy (678 grams/m ²) |
| Pile Density | 8181 oz./y ³ (303.36 kg/m ³) |
| Pattern Repeat | .40" (w) x 1.20" (l) approx. (1.02cm x 3.05cm) |
| Gauge | 1/10 (3.94 rows/cm) |
| Standard Width | 12 ft 3.66 m |
| Standard Adhesive | Commercialon Premium Carpet Adhesive |
| Standard Warranties | Standard Back APEX® SDP Polyester Fiber |
| Optional Warranties | iLoc® Backing |

Special Technologies

Environmental Specifications & Tests

| | |
|-------------------------------|------------------------------------|
| NSF 140: | N/A Certified |
| Total Recycled Content | 0% |
| Flooring Radiant Panel | Class 1 |
| Smoke Density | Less than 450 flaming (ASTM E 662) |
| Static Test | Less than 3 kv (AATCC-134) |
| ADA Compliance | Compliant For Accessible Routes |
| Pill Test | Yes |
| Lightfastness | Yes |

Colorways



3238 Great Barrier Reef



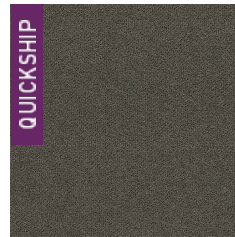
3239 Great Wall



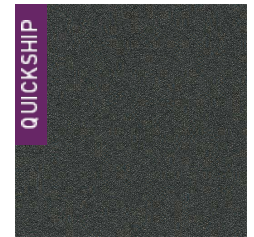
3240 Aurora Borealis



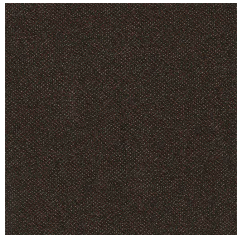
3241 Eiffel Tower



3242 Taj Mahal



3243 Alps



3244 Stonehenge



3245 Yosemite



3246 Grand Canyon