



Product Specifications

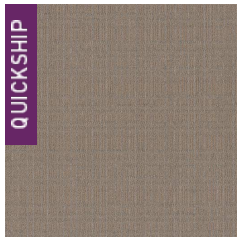
Construction	Patterned Loop
Backing	Woven Polypropylene
Dye Method	Solution Dyed
Fiber Type	APEX SDP® Polyester
Face Weight	18 oz./sy (610 grams/m ²)
Pile Density	6527 oz./y ³ (242.03 kg/m ³)
Pattern Repeat	3.00" (w) x 5.50" (l) approx. (7.62cm x 13.97cm)
Gauge	1/10 (3.94 rows/cm)
Standard Width	12 ft 3.66 m
Standard Adhesive	Commercialon Premium Carpet Adhesive
Standard Warranties	Standard Back APEX® SDP Polyester Fiber
Optional Warranties	iLoc® Backing

Special Technologies

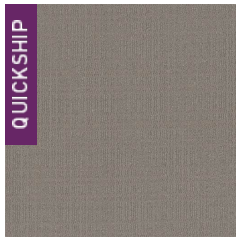
Environmental Specifications & Tests

NSF 140:	N/A Certified
Total Recycled Content	0%
Flooring Radiant Panel	Class 1
Smoke Density	Less than 450.0 flaming (ASTM E 662)
Static Test	Less than 3.0 kv (AATCC-134)
ADA Compliance	Compliant For Accessible Routes
Pill Test	Yes
Lightfastness	Yes

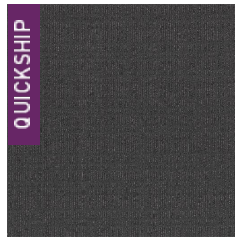
Colorways



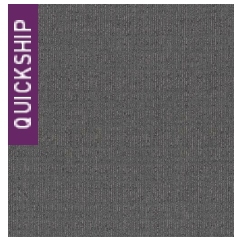
2784 Sahara



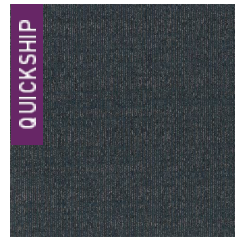
2785 Gobi



2786 Karakum



2787 Mojave



2788 Sonoran



2789 Basin



2790 Namib