



Product Specifications

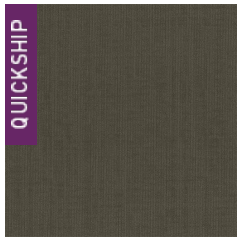
Construction	Cut and Loop
Backing	Woven Polypropylene
Dye Method	Solution Dyed
Fiber Type	APEX SDP® Polyester
Face Weight	20 oz./sy (678 grams/m ²)
Pile Density	6545 oz./y ³ (242.69 kg/m ³)
Pattern Repeat	24.00" (w) x 36.00" (l) approx. (60.96cm x 91.44cm)
Gauge	1/12 (4.72 rows/cm)
Standard Width	12 ft 3.66 m
Standard Adhesive	Commercialon Premium Carpet Adhesive
Standard Warranties	Standard Back APEX® SDP Polyester Fiber
Optional Warranties	iLoc® Backing

Special Technologies

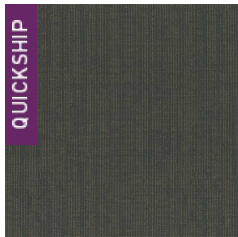
Environmental Specifications & Tests

NSF 140:	N/A Certified
Total Recycled Content	0%
Flooring Radiant Panel	Class 1
Smoke Density	Less than 450.0 flaming (ASTM E 662)
Static Test	Less than 3.5 kv (AATCC-134)
ADA Compliance	Compliant For Accessible Routes
Pill Test	Yes
Lightfastness	Yes

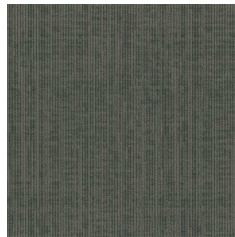
Colorways



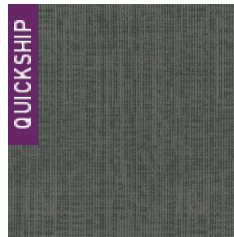
3388 Certainty



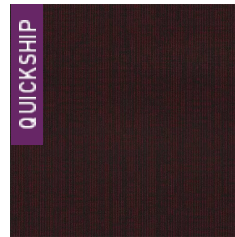
3389 Matter of ...



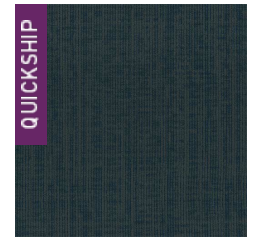
3390 Cold Hard ...



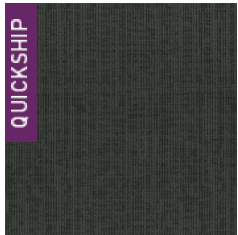
3391 Done Deal



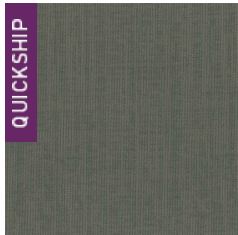
3392 Fact of Life



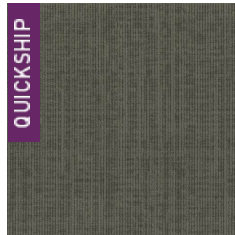
3393 Sure Thing



3394 All Sewn Up



3395 Sure Bet



3396 Shoo-In